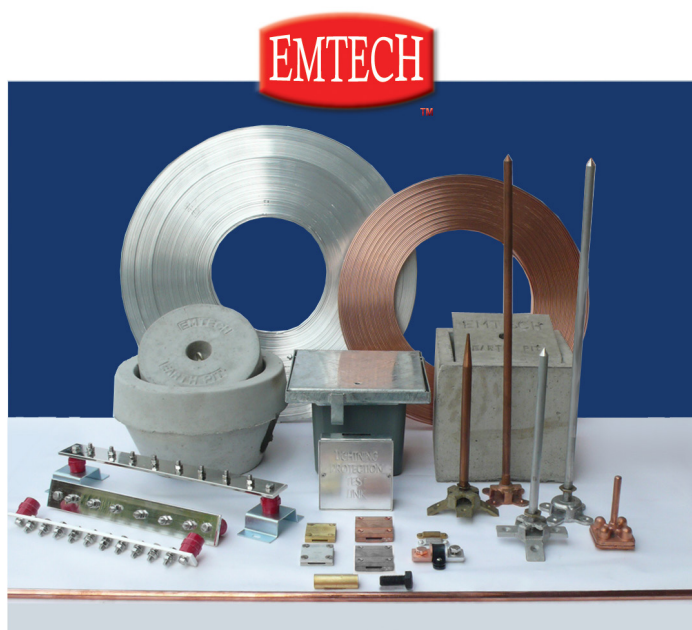




ELECTRICAL EARTHING &  
LIGHTNING PROTECTION PRODUCTS



Project Title	Consultant
National Institute of Education	CPG
Cantonment Complex	CPG
PSA Terminal 3	PSA
Tuas Checkpoint	CPG
King's Centre Building	Squire Mech
Pasir Laba Camp	Parsons
Warren Golf & Country Club	P.Tan & Partners
Changi Airport Police Station	CIAS
Fullerton Square	PCR
Yishun Secondary School	CPG
Pasir Ris Secondary	CPG
Mobile One Building	Regional
Tekong Camp	DSTA
Bukit Panjang Plaza Complex	H Y M&E
Harbour Front	Meinhart
Garden at Bishan Condominium	United Projects

## EMTECH ELECTRICAL EARTHING & LIGHTNING PROTECTION PRODUCTS

Copyright © 2008-2014 Tan Teck Seng Electric Co. Pte. Ltd. All rights reserved.  
Material data listed in this catalog supercedes all information in previous publications.



Tan Teck Seng Electric Co. (Pte) Ltd  
137 Kaki Bukit Avenue 1,  
Shun Li Industrial Park, Singapore 416003  
tselect@tts.sg Tel: 6747-8833 Fax: 67470370

All product dimension and material specification is as accurate as possible at time of publication.  
Tan Teck Seng Electric Co. Pte. Ltd. reserves the right to change the design or specification of its products without notification.  
Whilst utmost care has been taken to maintain accuracy in the data, the company does not hold any responsibility for errors and accepts no liability for the use or interpretation of this data.

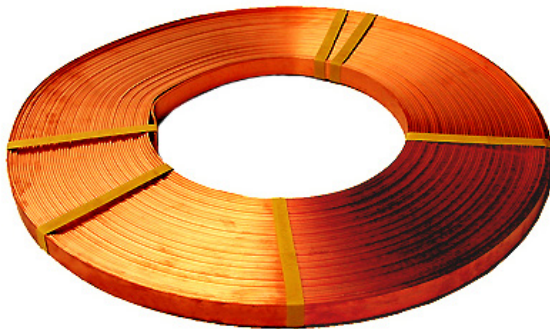
○ BARE ALUMINIUM TAPE



Bare Aluminium Tape

Material	Aluminium
Size	25 x 3mm
Product Code	AT-1-C

○ BARE COPPER TAPE



Bare Copper Tape

Material	Copper
Size	25 x 3mm
Product Code	CT-1-50

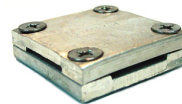
○ ALUMINUM TAPE-CLIP



Aluminum Tape-Clip

Material	Aluminum
Size	1" x 1/8"
Product Code	SB-1-A

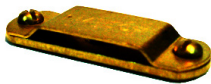
○ ALUMINIUM SQUARE TAPE CLAMP



Aluminium Square Tape Clamp

Material	Aluminium
Product Code	TC-S-A

○ BRASS TAPE-CLIP



Brass Tape-Clip

Material	Brass
Size	1" x 1/8"
Product Code	SB-1-B

○ BRASS SQUARE TAPE CLAMP



Brass Square Tape Clamp

Material	Brass
Product Code	TC-S-B

○ HEAVY DUTY METALLIC DC TAPE-CLIP



Heavy Duty Metallic DC Tape-Clip

Material	Brass
Size	1" x 1/8"
Product Code	SB-1-BH

BRASS ROUND TEST CLAMP



Brass Round Test Clamp

Material	Copper Alloy
Tape Size	25 x 3mm
Product Code	EL-TC-R-E

BI-METALLIC CONNECTOR



Bi-Metallic Connector

Material	Copper/ Aluminium
Product Code	BM1

LIGHTNING TEST LINK BOX



Lightning Test Link Box

Size	125mm x 125mm x 40mm
Product Code	Aluminium : TLB Stainless Steel : TLB-SS

GALVANIZED LID INSPECTION PIT



Galvanized Lid Inspection Pit

Material	Plastic base with hot-dipped galvanized cover
Product Code	GIP

POLYMER LID INSPECTION PIT



Polymer Lid Inspection Pit

Material	Plastic base with polymer cover
Product Code	EL-EPP

CAST IRON LID INSPECTION PIT



Cast Iron Lid Inspection Pit

Material	Plastic base with cast iron cover
Product Code	EL-EPIC

SQUARE CONCRETE EARTH PIT



Square Concrete Earth Pit

Material	Concrete
Product Code	CIP-S

HEAVY DUTY CIRCULAR CONCRETE EARTH PIT



Circular Concrete Earth Pit

Material	Concrete
Product Code	CIP-C

EARTH ROD



Copper Bonded Steel Rod

Size	5/8" x 6ft 3/4" x 6ft
Product Code	CR586E CR586E-250 CR346E

DRIVING STUD



Driving Stud

Size	5/8" 3/4"
Product Code	ST58 ST34

BRASS COUPLING



Brass Coupling

Size	5/8" x 70mm 3/4" x 70mm
Product Code	CB58E CB34E

BRASS HEAVY DUTY SQUARE TEST CLAMP



Brass Heavy Duty Square Test Clamp

Material	Brass
Product Code	TC-S-BH

4 HOLES EARTH POINT



4 Holes Earth Point  
Product Code | EP4H-S

ALUMINIUM AIR TERMINAL C/W BASE



Aluminium Air  
Terminal c/w Base

Material	Aluminium
Finial Point Size	1 ft, 1½ ft, 2 ft, 2½ ft, 3 ft

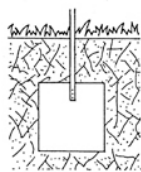
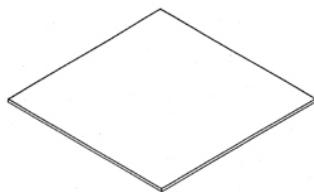
COPPER AIR TERMINAL C/W BASE



Copper Air Terminal  
c/w Base

Material	Copper/Brass
Finial Point Size	1 ft, 1½ ft, 2 ft, 2½ ft, 3 ft

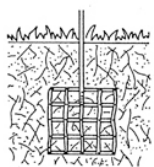
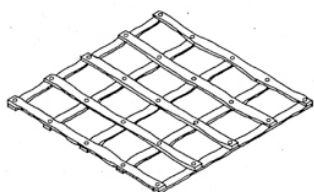
COPPER PLATE



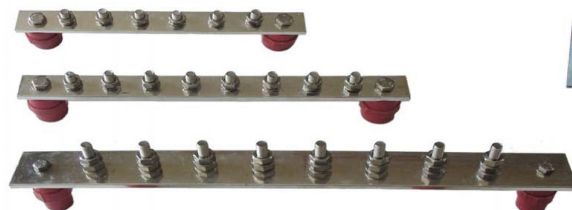
Copper Plate

Size	600 mm x 600mm x 1.5mm, 600 mm x 600mm x 3mm, 900 mm x 900mm x 1.5mm, 900 mm x 900mm x 3mm, 1200 mm x 1200mm x 1.5mm, 1200 mm x 1200mm x 3mm
------	---

COPPER MESH



EARTH BARS



Optional:  
Earth Bar  
Base Bracket

Earth Bars

Size	4 way, 6 way, 8 way, 10 way, 12 way, 14 way
Material	Copper Tinned - 25mm x 6mm, 50mm x 6mm
Note	Other sizes can also be fabricated to requirement

Copyright © 2008-2014 Tan Teck Seng Electric Co. Pte. Ltd. All rights reserved.  
Material data listed in this catalog supercedes all information in previous publications.

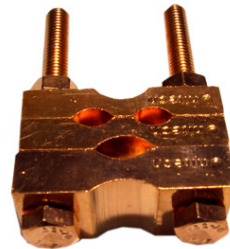


U CLAMP



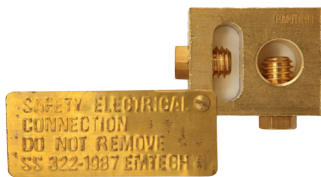
U Clamp

H CLAMP



H Clamp

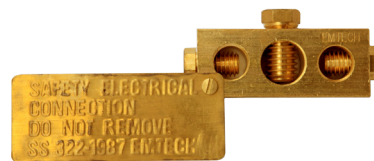
ROD TO TAPE CLAMP



Rod to Tape Clamp

Product Code	AC-E
--------------	------

ROD TO CABLE CLAMP



Rod to Cable Clamp

Product Code	BC-E
--------------	------

C Type Connector

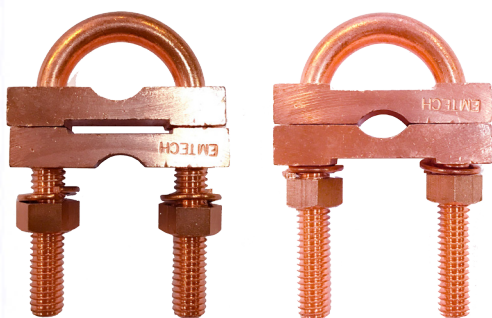


C Type Connector

Size	16mm, 25mm, 35mm, 50mm, 70mm, 95mm, 120mm, 150mm
Material	Copper Tinned

Copyright © 2008-2014 Tan Teck Seng Electric Co. Pte. Ltd. All rights reserved.  
Material data listed in this catalog supercedes all information in previous publications.

U CLAMP

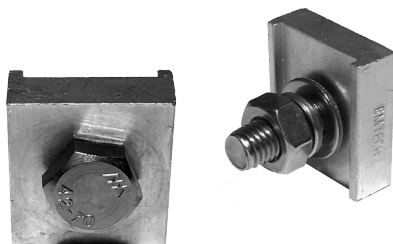


U CLAMP

Material	Copper Alloy
Tape Dimensions	25 x 3mm , 25 x 6mm
Rod Diameter	5/8", 3/4"
Cable Diameter	50 - 95mm <sup>2</sup>
Product Code	EL-UCT-801

Custom sizes available

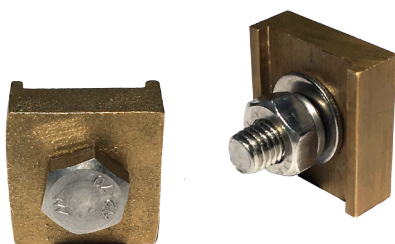
ALUMINIUM B BOND CLAMP



Aluminium B Bond Clamp

Material	Aluminium
Tape Size	25 x 3mm
Product Code	EL-BB-A-E

COPPER B BOND CLAMP

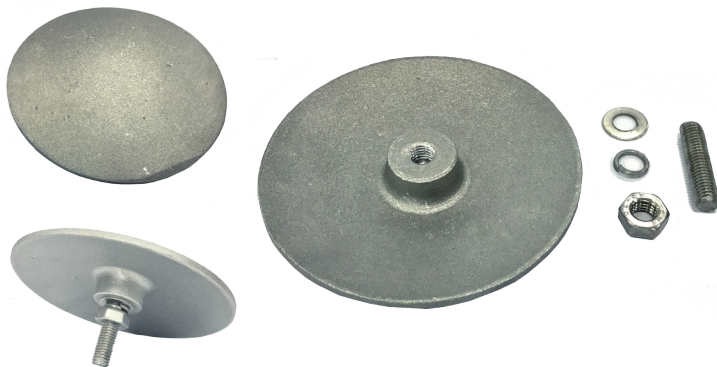


Copper B Bond Clamp

Material	Brass
Tape Size	25 x 3mm
Product Code	EL-BB-B-E



<b>Strike Pad Brass</b>	
Material	Copper Alloy
Diameter	100mm
Thread Size	M10: Comes with Stainless Steel 40mm length dowel c/w bolt & washers  5/8": Comes without dowel
Application	Exposed attractive point on roof or side of building for hidden/ embedded conductor



<b>Strike Pad Aluminium</b>	
Material	Aluminium Alloy
Diameter	100mm
Thread Size	M10: Comes with Stainless Steel 40mm length dowel c/w bolt & washers  5/8": Comes without dowel
Application	Exposed attractive point on roof or side of building for hidden/ embedded conductor

Copyright © 2008-2014 Tan Teck Seng Electric Co. Pte. Ltd. All rights reserved.  
Material data listed in this catalog supercedes all information in previous publications.



# EMTECH WATER PROOF SEAL EARTHING SYSTEM



**EL-EPP**  
LOCKABLE HIGH PERFORMANCE PVC PIT



**EL-WPSP1**  
EARTH ELECTRODE SEAL TOP



**EL-WPSP1-300**  
PIPE - 50MM X 300MM

# EMTECH WATER PROOF SEAL EARTHING SYSTEM - DOUBLE FLANGE



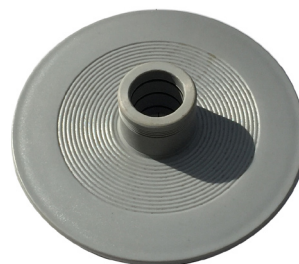
**EL-EPP**  
LOCKABLE HIGH PERFORMANCE PVC PIT



**EL-WPSP1**  
EARTH ELECTRODE SEAL TOP



**EL-WPSP2-1000**  
PIPE - 50MM X 1000MM



**EL-WPSP2**  
EARTH ELECTRODE SEAL - BOTTOM



## EL-EC-[PIPE DIAMETER]-E

### PIPE BONDING CLIP

PRODUCT CODE	RECOMMENDED PIPE DIAMETER	LENGTH OF CLIP
EL-EC-1-E	1"	6"
EL-EC-2-E	2"	10"
EL-EC-3-E	3"	12"
EL-EC-4-E	4"	15"
EL-EC-6-E	6"	23"
EL-EC-8-E	8"	28"
EL-EC-10-E	10"	32"
EL-EC-12-E	12"	40"

Copyright © 2008-2014 Tan Teck Seng Electric Co. Pte. Ltd. All rights reserved.

All content in this catalogue, including (but not limited to) the layout, design, images, brand names and other information, are protected by copyright and other intellectual property laws. Except when expressly permitted under these laws, no part of the information contained herein may be reproduced or transmitted in any form or by any means (electronic, mechanical, photocopying, recording, or otherwise), or used for advertising or promotional purposes, general distribution, creating new collective works, or for resale, without prior written permission of Tan Teck Seng Electric Co. Pte. Ltd.

All product dimension and material specification is as accurate as possible at time of publication.

Tan Teck Seng Electric Co. Pte. Ltd. reserves the right to change the design or specification of its products without notification.

Whilst utmost care has been taken to maintain accuracy in the data, the company does not hold any responsibility for errors and accepts no liability for the use or interpretation of this data.

Copyright © 2008-2014 Tan Teck Seng Electric Co. Pte. Ltd. All rights reserved.

All content in this catalogue, including (but not limited to) the layout, design, images, brand names and other information, are protected by copyright and other intellectual property laws. Except when expressly permitted under these laws, no part of the information contained herein may be reproduced or transmitted in any form or by any means (electronic, mechanical, photocopying, recording, or otherwise), or used for advertising or promotional purposes, general distribution, creating new collective works, or for resale, without prior written permission of Tan Teck Seng Electric Co. Pte. Ltd.

All product dimension and material specification is as accurate as possible at time of publication.

Tan Teck Seng Electric Co. Pte. Ltd. reserves the right to change the design or specification of its products without notification.

Whilst utmost care has been taken to maintain accuracy in the data, the company does not hold any responsibility for errors and accepts no liability for the use or interpretation of this data.